

# MERIAVINO

## Multiscale Sensing for Disease Monitoring in Vineyard Production

**Adel Hafiane**



**Kick-off cofunded Projects Seminar  
17-18th March 2021**

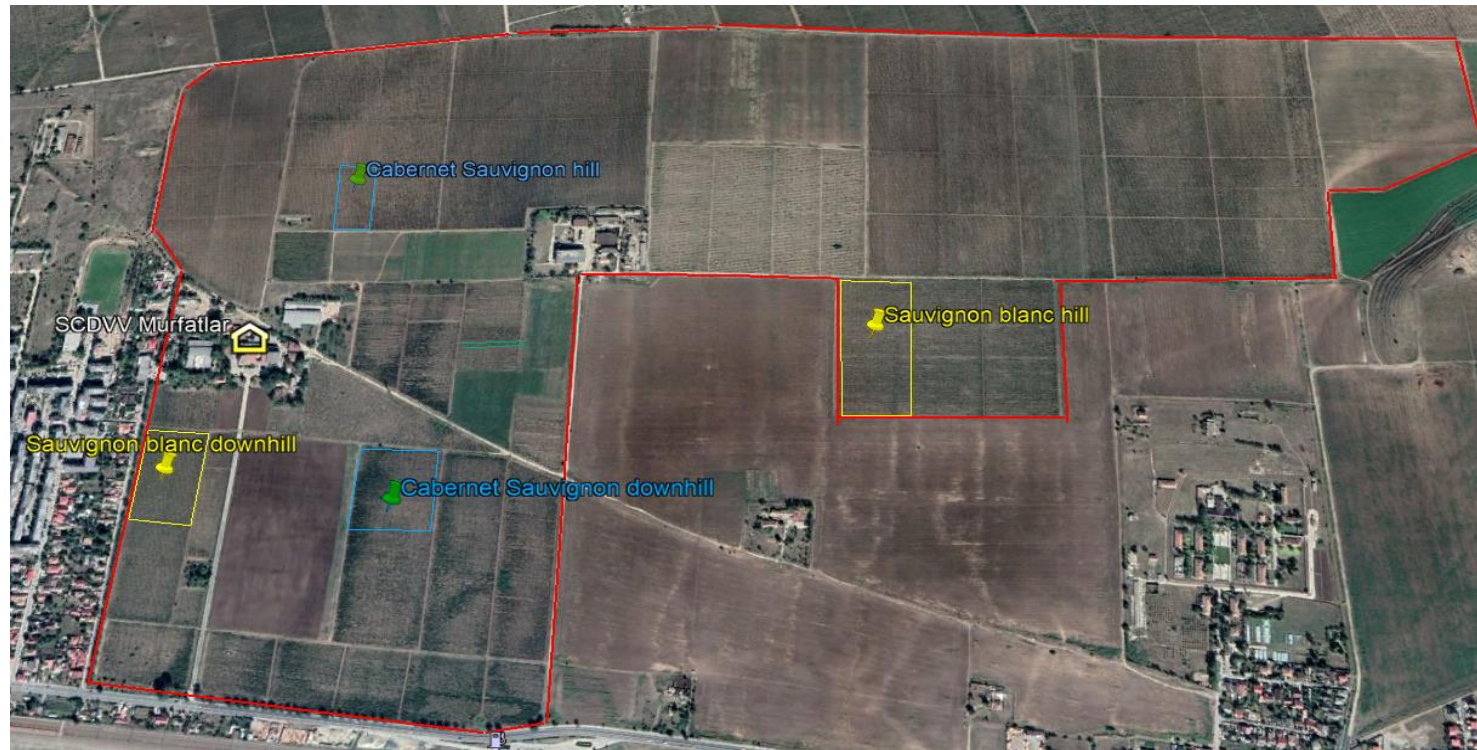
## Goal and context

- EU have approximately 3.2 million ha of vines
- Diseases are increasing and impacting significantly the production
- Managing Vine diseases is an important challenge



# Main project activities / challenges

- Vine diseases monitoring, reducing the pesticide use
- IoT, Remote sensing and big data technologies
- Three vineyard sites: Romania, Greece and France

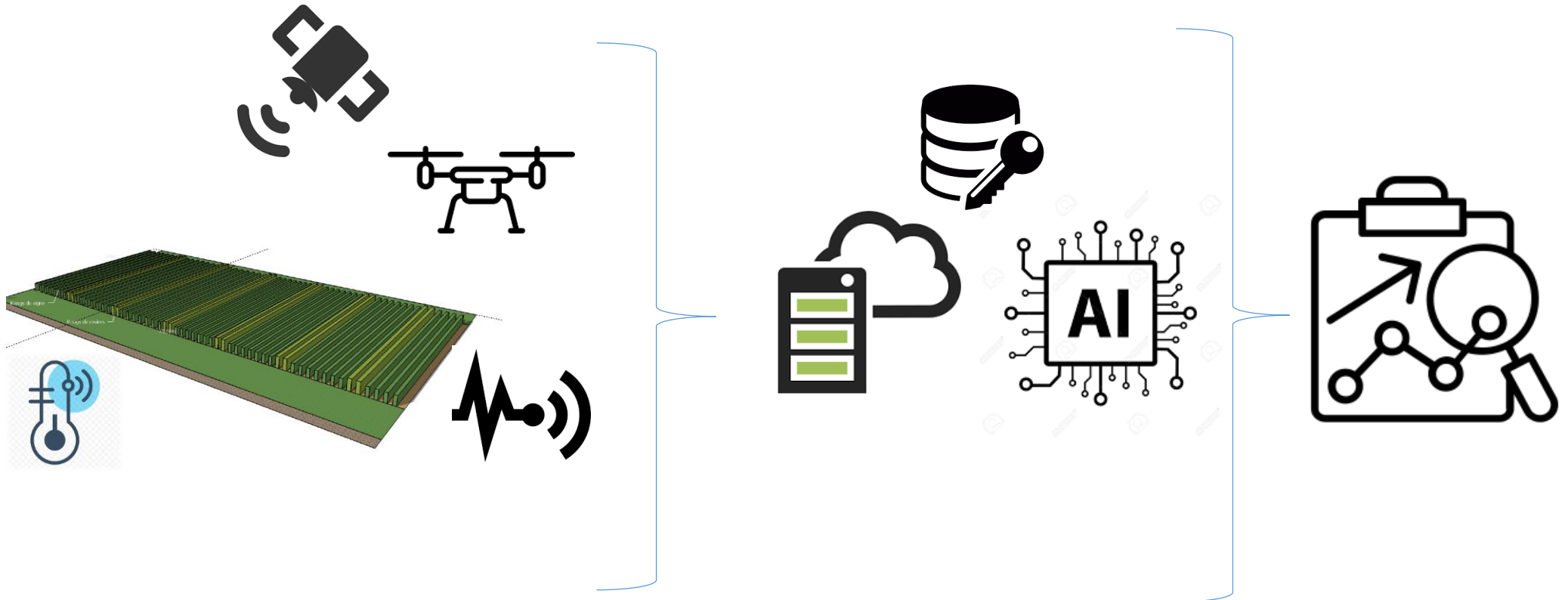


## Objective and Hypothesis

- **Hypothesis:** heterogenous data from vineyards in different countries will enable to develop robust decision tools based on AI
- Intelligent acquisition methods and processing of Big Data
- ML approach for finding data patterns enables earlier detection of the vine diseases, and the estimation of yield quality and quantity.
- Earlier disease detection and localization will help winegrowers to reduce phytosanitary chemicals.

# Research approach & activities

- Multiscale approach
- Data protection and analysis, prediction models and decision tools
- Vineyard monitoring, Remote sensing, IoT, Artificial intelligence, Cybersecurity, Data analysis



## Potential impact

- Helping vine farmers and companies to access real-time information and diagnosis decisions
- Disease identification/warning, prediction, and localized treatment will help to make concrete and strong actions for sustainable development and landscape preservation
- Innovations in the agriculture and food industry

# Cooperation with Stakeholders / value chain

- Winegrowers, companies
- Through partners : French Institute of Vine, Atos company
- Collaboration, regional, National and European Stakeholders

# Dissemination and outreach

- General public communication
  - Project website
  - Results
  - News ...
- Targeted communication
  - Scientific workshops, conferences and side events
  - Stakeholders' workshops, events,...

## Partners / funders

Partner	Type	Country	Funder
INSA CVL	Academic	France	ANR
CMU	Academic	Romania	UEFISCDI
SVM	Academic	Romania	UEFISCDI
UNIWA	Academic	Greece	GSRI
IFV	Service	France	ANR
ATOS	Company	France	ANR



# LET'S KEEP IN TOUCH!

EMAIL [adel.hafiane@insa-cvl.fr](mailto:adel.hafiane@insa-cvl.fr)

## Thank you for your attention!